

Chess.com



Problemas de Tática (iniciação) vol 1

1



2

3



4



5



6



7



8



9



10



11. Cf6+ e Bxb7;
12. Cg4+ e Dxcg5;
13. Bxf2;
14. Te1+
15. De8+, b8=D, Dxb8;
16. Txc8;
17. Tce1, Te8+ e Txe8++;
18. h3++
19. Dd6+ e Cf6++;
20. Txe7+ e Dxc7++;
21. Dh3 e Dg2++;

11



12



13



14



15



16



17



18



19



20



21



Soluções:

- 1 Dh2+ e Df2++
- 2.Dh2++
- 3.dxe5;
- 4.Bb4;
- 5.Th8+ e T1h7++;
- 6.Dxf8+ e Dxc7++;
- 7.Tg8 e Tg6++;
- 8.Dh3++
- 9.Df2++
- 10.De1+ e Th1++

22



23



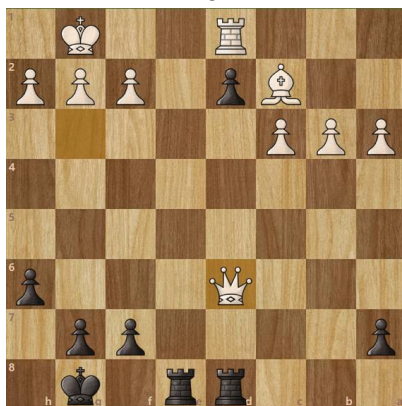
24



25



26



27



28



29



30



31



32



Soluções

- 33 Da8+ e Bxb1
- 34.Cd2+ e Bxf3
- 35.b4 e bxa3
- 36.Txc3+ e Da6++
- 37.Cxd6 e Dxc4
- 38.Dxe8+ e Txe8++
- 39.Bxh2 e Dxc6
- 40.Txh3++
- 41.Df7+, e7+, e8=D++
- 42.Bxh8
- 43.Tg3+ e Cf7++

33



34



35



36



37



38



39



40



41



42



43



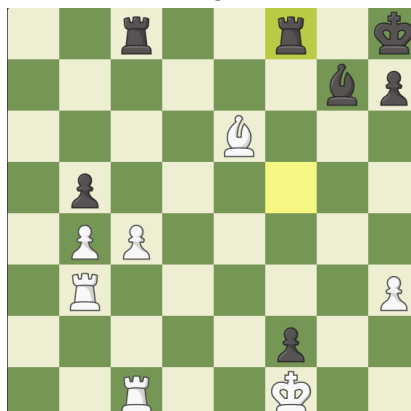
Soluções

- 22. Dxf2+ e Dg1++
- 23. Thxh2 e Ch3++
- 24. Cc5 ameaça duplo em c3 ou d3;
- 25. h3++
- 26. Te1+ e dxe1=T++
- 27. Ce3+ e Cxd5;
- 28. De3++;
- 29. Dxh7++
- 30. Cg5 e mate em 1;
- 31. Dh8+ e Dh7++
- 32. Tg7 e fxg3

44



45



46



47



48



49



50



51



52



53



54



Soluções

55. Bxf3, bxc6, exf4
56. Cg5+ , Dxa8
57. Tgx3+
58. De2++
59. Tgx7+, Cg3+, Th7++
60. Dh8+, Bxd6+, Dxc8++
61. De5+
62. Cxg5
63. Bd4+, Bxc5
64. Be5+, Bxf6++
65. Bb4

55



56



57



58



59



60



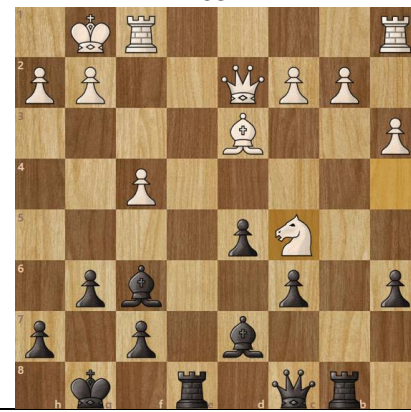
61



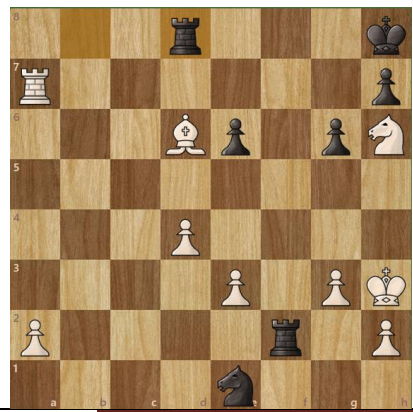
62



63



64



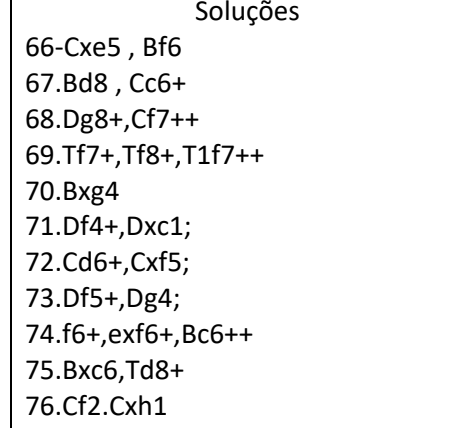
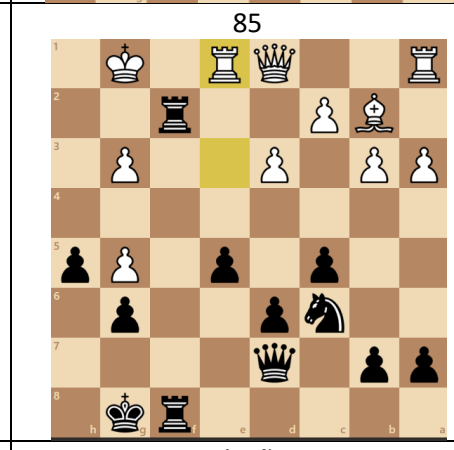
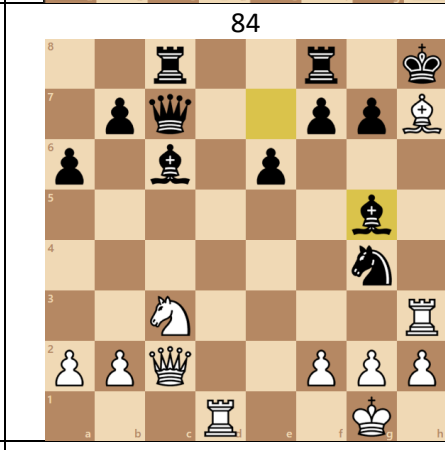
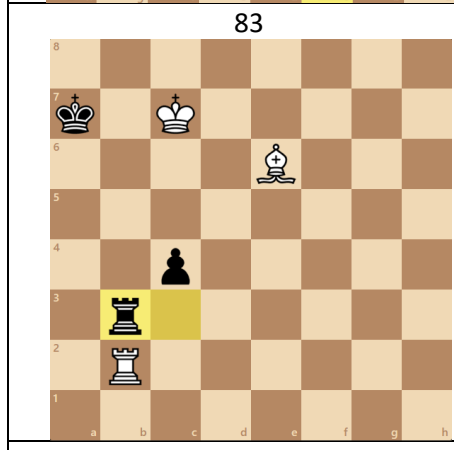
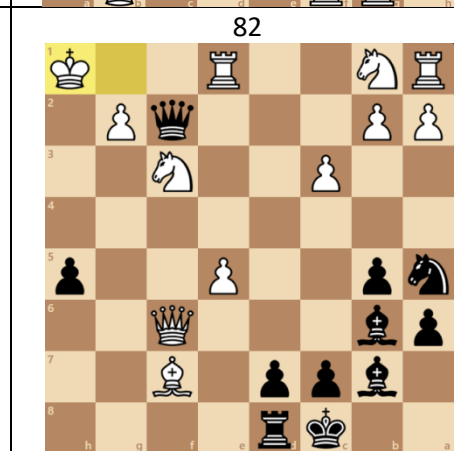
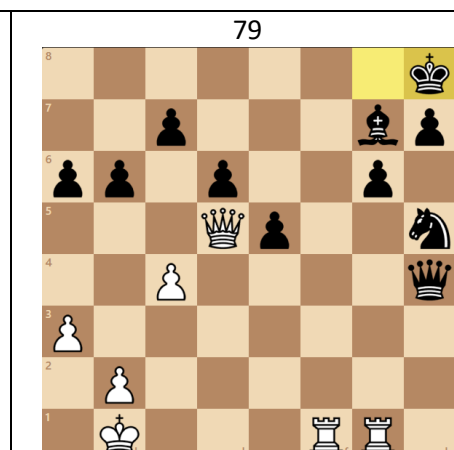
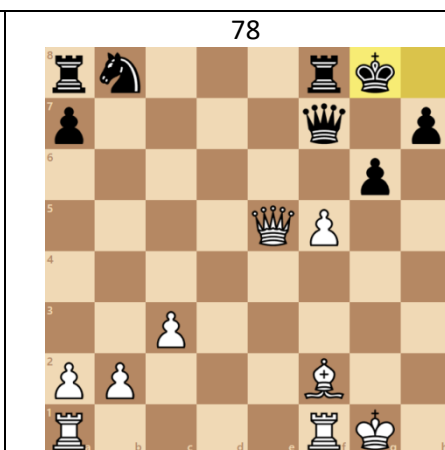
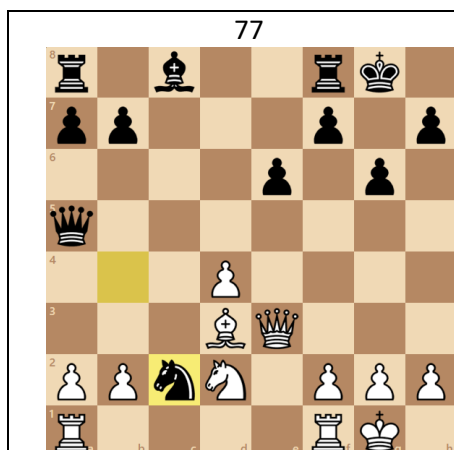
65



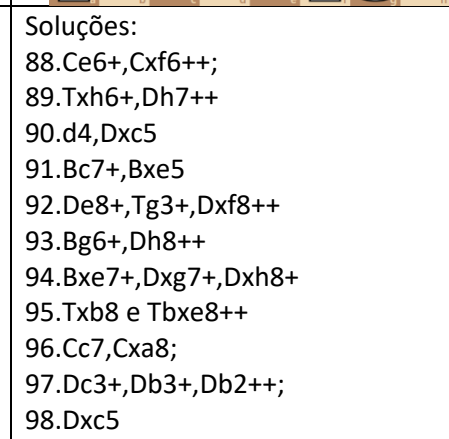
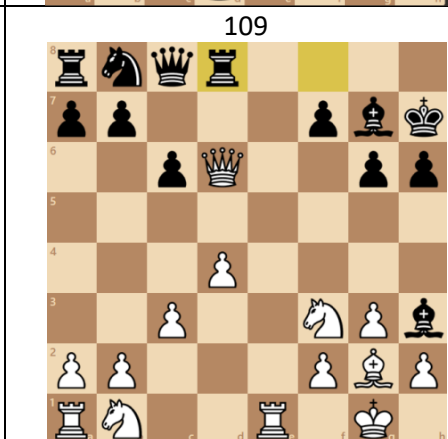
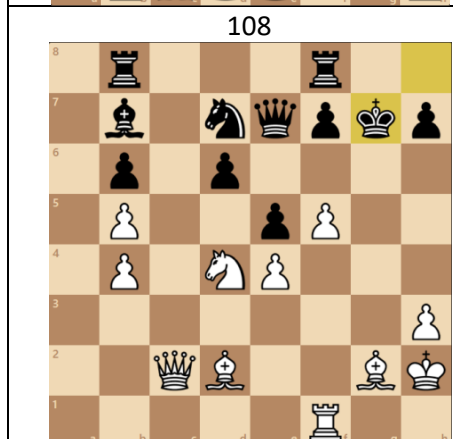
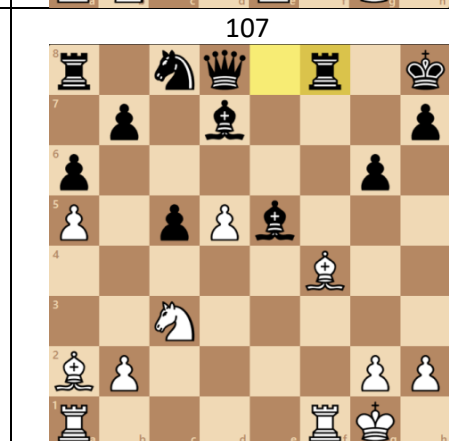
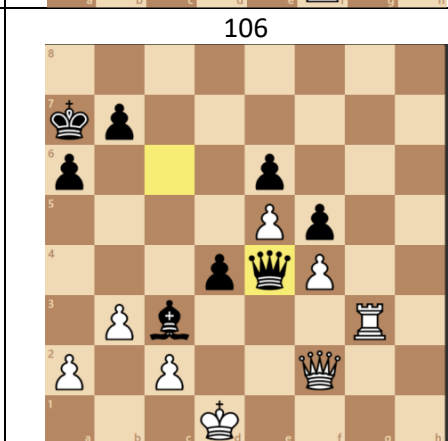
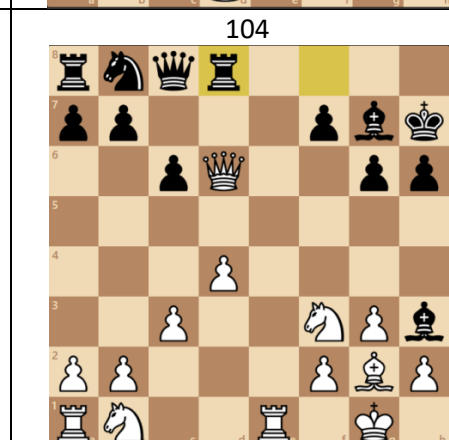
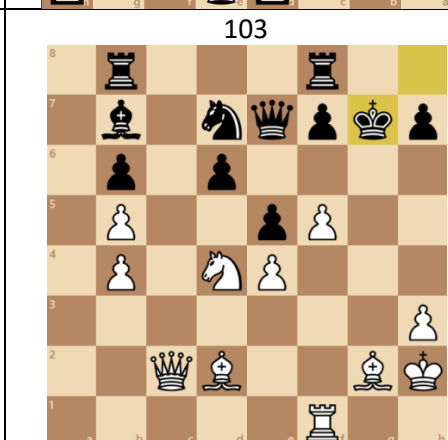
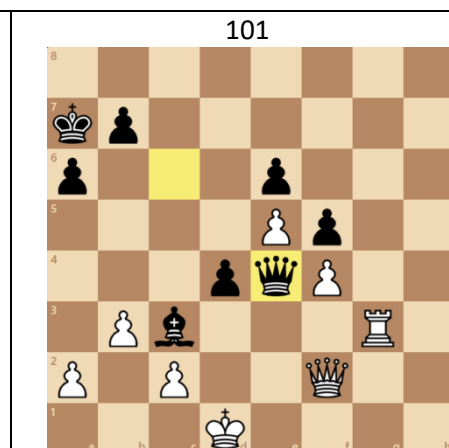
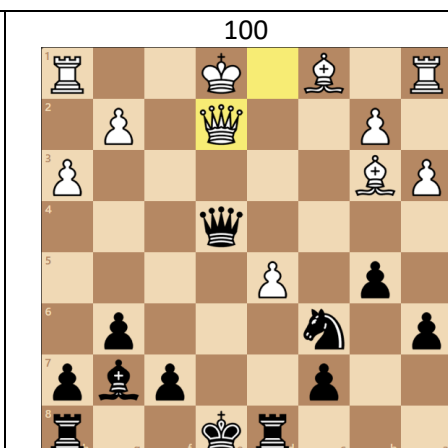
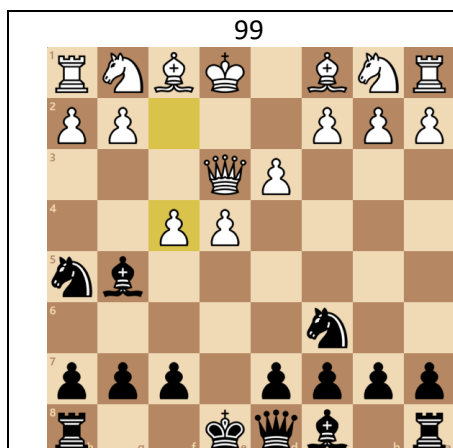
Soluções

44. De1+ e Dxd1++
45. Bxc8
46. exf3 e Cxb4
47. Te2, Dxf3, Df2+, Dh2++
48. Dxd4 e Cxd4
49. Dh4+ e Dxa4
50. Cxd5, Bxd5, Dxd5
51. Bxe6, Dh5+, Cxg6
52. e5, exf6
53. Bb3, Bxd5
54. Bxh6, Txh6, Dxd6

<p>66</p>	<p>67</p>	<p>68</p>
<p>69</p>	<p>70</p>	<p>71</p>
<p>72</p>	<p>73</p>	<p>74</p>
<p>75</p>	<p>76</p>	<p>Soluções</p> <p>77. Bxc2 78. Bd4 79. Da8+, Dxd8+, Dxf8++ 80. Dxa2, Da1++ 81. Cxf7, Cxh8 82. Bxf3, Dxe1 83. Ta2+, Txa3++ 84. Bg8+, Dh7++ 85. Dh3, Dg2 ou Dh2++ 86. Dh4++ 87. Dd1++</p>



<p>88</p>	<p>89</p>	<p>90</p>
<p>91</p>	<p>92</p>	<p>93</p>
<p>94</p>	<p>95</p>	<p>96</p>
<p>97</p>	<p>98</p>	<p>Soluções:</p> <p>99. Bxf4, Bxc1</p> <p>100. Dxe2+, Cc4+, Cxb3</p> <p>101. Txc3</p> <p>102. Bxe5, d6</p> <p>103. f6, Cf5+, Cxe7</p> <p>104. Bh3, Bxc8</p> <p>105. Da4+, Da6</p> <p>106. Txc3</p> <p>107. Be5+, d6+</p> <p>108. f6, Cf5+</p> <p>109. Bxh3, Bxc8</p>





CLUBE DE XADREZ



LOULÉ ++